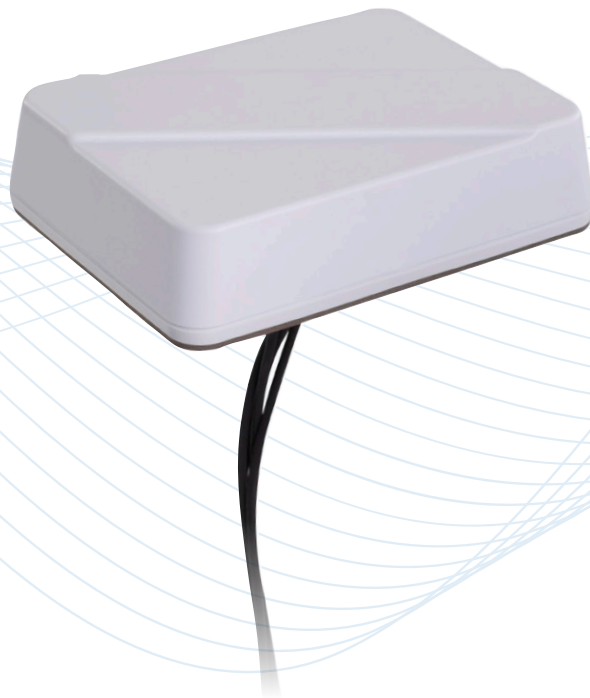


# Medallion™ II Permanent Mount

Combination Antenna - 5G Cellular, Wi-Fi, and GNSS

GLLPDLTE-B, GLLPDLTE-W, GLLPDLTEWI-B, GLLPDLTEWI-W



## Description

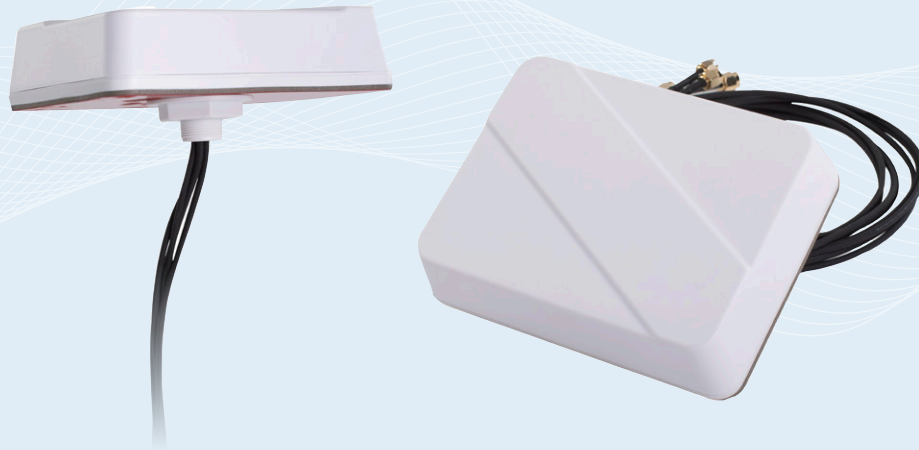
Low profile dual port 5G/4G GNSS multiband antenna covering sub 6 GHz 5G FR1 upper frequencies, with a single dual band WiFi port option. Includes a built-in ground plane for maximum installation flexibility.

## Technologies

- 5G FR1
- CBRS
- 4G LTE
- Dual band WiFi
- GNSS L1

## Features

- Durable 1-1/3-inch tall housing for permanent mount IIoT installations requiring minimum overhead clearance
- Proprietary GNSS technology with superior out-of-band rejection
- Easy through-hole mount installation for fixed indoor or outdoor cabinet-top IIoT or Enterprise networks
- Suitable for vehicular rooftop applications



## Medallion™ II Permanent Mount

### Combination Antenna - 5G Cellular, Wi-Fi, and GNSS

The Medallion™ II 5G FR1 low profile IIoT antenna is ideal for fixed cabinet mount or vehicular rooftop installations with limited overhead space clearance. This GNSS multiband antenna includes two 5G FR1 ready ports, and an optional dual band 2.4/5 GHz port for WiFi coverage. Its proprietary, built-in GNSS technology features superior out-of-band rejection filtering for optimal operation with industrial IoT wireless networks. This antenna platform is housed in a rugged, UV-stable housing, which is available in black or white color options.

#### Features

- Dual cellular ports for 5G FR1 networks, including CBRS bands
- Durable 1-1/3-inch tall housing for permanent mount installations with limited overhead clearance
- Proprietary GNSS compatibility, covering global systems: 1565-1608 MHz (GPS L1; GALILEO E1; GLONASS L1; QZSS L1; BEIDOU B1)
- Superior GNSS out-of-band rejection filtering for optimal multiband performance
- Optional dual band 2.4/5 GHz WiFi port
- Simple through-hole mount installation for fixed indoor or outdoor, cabinet-top IIoT or Enterprise networks
- Suitable for vehicular rooftop outdoor or indoor applications
- Low profile, UV-stable white or black radome options
- IP67 rating

# Medallion™ II Permanent Mount

## Combination Antenna - 5G Cellular, Wi-Fi, and GNSS

### Standard Configurations

Model	Elements	Cable	Connector <sup>2</sup>	Mount	Housing Color
GLLPDLTE-W	LTE (2) GNSS (1)	Two- 3 foot RG-316 pigtails (Cellular) One- 3 foot RG-316 (GNSS)	SMA Plug (Cellular) SMA Plug (GNSS)	M18X2 threaded stud (18 mm long)	White
GLLPDLTE-B	LTE (2) GNSS (1)	Two- 3 foot RG-316 pigtails (Cellular) One- 3 foot RG-316 (GNSS)	SMA Plug (Cellular) SMA Plug (GNSS)		Black
GLLPDLTEWI-B	LTE WiFi GNSS	Two- 3 foot RG-316 pigtails (Cellular) One- 3 foot RG-316 pigtails (WiFi) One- 3 foot RG-316 (GNSS)	SMA Plug (Cellular) Reverse Polarity SMA Plug (WiFi) SMA Plug (GNSS)		White
GLLPDLTEWI-W	LTE WiFi GNSS	Two- 3 foot RG-316 pigtails (Cellular) One- 3 foot RG-316 pigtails (WiFi) One- 3 foot RG-316 (GNSS)	SMA Plug (Cellular) Reverse Polarity SMA Plug (WiFi) SMA Plug (GNSS)		Black

### Electrical Specifications – RF Antennas

F1 (MHz)	F2 (MHz)	SWR <sup>3</sup>		Gain (dB) <sup>3</sup>		Efficiency <sup>3</sup>		Polarization	Nominal Impedance	Maximum Power
		Max	Typical	Range (±)	Avg	Range (±)				
<b>LTE Primary Port 1</b>										
617	698	3.2	2.4	1.6	0.9	42%	9%	Linear	50 ohms	50 watts
698	802	2.0	4.5	3.5	1.0	45%	6%			
824	960	2.7	5.1	3.9	1.2	51%	11%			
1710	2200	1.7	5.6	5.0	0.6	64%	4%			
2300	2690	1.6	5.2	5.0	0.2	60%	2%			
3400	3800	1.9	6.1	5.3	0.8	49%	2%			
5150	5950	2.2	4.9	4.2	0.8	41%	5%			
<b>LTE Primary Port 2</b>										
617	698	4.6	0.5	0.4	0.1	35%	15%	Linear	50 ohms	50 watts
733	802	1.8	0.5	0.5	0.0	49%	1%			
824	960	2.9	0.5	0.5	0.0	50%	4%			
1805	2200	2.1	0.6	0.6	0.1	56%	6%			
2300	2690	2.3	0.5	0.5	0.1	46%	5%			
3400	3800	1.4	0.6	0.6	0.0	57%	1%			
5150	5950	1.3	0.5	0.5	0.0	48%	4%			
<b>WiFi Port 3</b>										
2400	2500	1.6	6.0	4.5	1.4	58%	3%			
4900	5900	2.2	6.7	4.6	2.1	48%	7%			

### Minimum Isolation (dB)<sup>3</sup>

	LTE Primary (1)	LTE Secondary (2)	WiFi (3)
LTE Primary (1)	690-960 MHz	698-960 MHz	617-960 MHz
	1710-2700 MHz	1.71-2.7 GHz	1.71-2.7 GHz
	3300-4200 MHz	3.3-5.9 GHz	3.3-5.9 GHz
LTE Secondary (2)		690-960 MHz	617-960 MHz
		1710-2700 MHz	1.71-2.7 GHz
		3300-4200 MHz	3.3-5.9 GHz
WiFi (3)			

<sup>1</sup> When installed according to PCTEL's installation instructions.  
<sup>2</sup> Consult Customer Service for other connector options.  
<sup>3</sup> Measurements taken with 3-ft cables on a 2-ft ground plane.

# Medallion™ II Permanent Mount

## Combination Antenna - 5G Cellular, Wi-Fi, and GNSS

### Electrical Specifications – GPS Antenna

Frequency Band	1565-1608 MHz
Amplifier Gain	@ 3.0 VDC: 26 dB (typical)
Output VSWR	2.0:1 (maximum)
DC Current	25 mA (typical)
DC Voltage	2.8-6.0 V (operating) ≤ 12.0 V (survivability)
Noise Figure	< 2.0 dB (typical)
Out-of-Band Rejection	f <sub>0</sub> = 1586 MHz / f <sub>0</sub> ± 50 MHz: ≥ 60 dBc / f <sub>0</sub> ± 60 MHz: ≥ 70 dBc
Nominal Gain	3 dBic @ 90° -2 dBic @ 20°
Polarization	Right hand circular
Nominal Impedance	50 ohms

### Mechanical Specifications

#### Physical

Dimensions (W x H)	5.19 L x 4.0 W x 1.3 H inches (13.2 x 10.2 x 3.4 cm)
Weight	0.67 lbs (10.8 oz)
Radome Construction	UV-Stable Rugged Thermoplastics
Operating / Storage Temperature	-40°C to +85°C
Gasket Design & Construction	

**CONTACT US**

**For more information about  
this product contact your  
sales representative or visit  
> [pctel.com/antenna-products](https://pctel.com/antenna-products)**

### **Solving Complex Wireless Challenges**

PCTEL is a leading global provider of wireless technology, including purpose-built Industrial IoT devices, antenna systems, and test and measurement solutions. Trusted by our customers for over 25 years, we solve complex wireless challenges to help organizations stay connected, transform, and grow.



**PCTEL, Inc.**

T: +1 630 372 6800 | [pctel.com](https://pctel.com)

Specifications subject to change without notice. PCTEL® and Medallion™ are trademarks or registered trademarks of PCTEL, Inc. ©2021 PCTEL, Inc. All rights reserved. (June 2021)